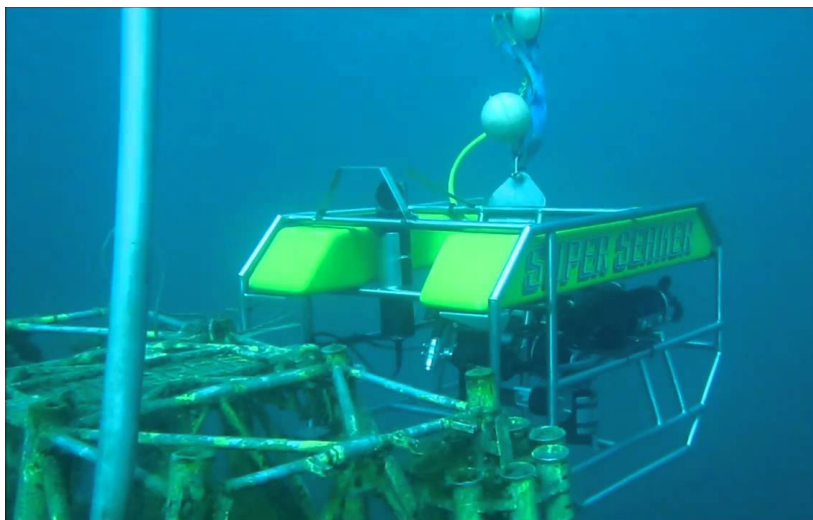


# SUPERSEAKER ROV

## EYEBALL CLASS ROV SYSTEM



The Superseaker ROV has a proven track record in the offshore oil & gas industry working on jack-up drilling rigs stretching back more than a decade. Super-Seaker has proven itself as a reliable eyeball. ROV which is designed to be easily maintained by ROV crews on-site.



For more informations, please flash this code and visit our web site.

### VEHICLE SPECIFICATIONS

VEHICULE TYPE	INSPECTION/EYEBALL/LIGHT
MASS IN AIR	85 KG
LENGTH	1010 mm
HEIGHT	700 mm
WIDTH	650 mm
FORWARD SPEED	2,6 KNOTS
THRUST FORWARD	35 KG
THRUST LATERAL	17 KG
THRUST VERTICAL	14 KGF

### STANDARD EQUIPMENT FIT

2 x CAMERAS	1 colour CCD Camera 1 Low-light b/w CCD camera
SONAR	Sonavision 2000
TILT UNIT	1 x 150 degree tilt unit
COMPASS	Digital Heading sensor
OPTIONS	CP Probes, stills, minibeacon, manipulator
DEPTH GAUGE	Electronic sensor

### POWER REQUIREMENT

POWER REQUIREMENT 440v AC, 3 phase 15 kva

### CONTROL SHACK

LENGHT	3,35m
HEIGHT	2,5m
WT DAVIT ARM	5T
WIDTH	2,45m
EQUIPMENT FIT	Main transformer for ROV power and domestic power ROV control unit in 19" rack Sonar processor 2 x Monitors 2 x VCRs Depth and heading display

### LAUNCH AND RECOVERY SYSTEM

LAUNCH SYSTEM	SuperSeaker is provided with a launch and recovery davit attached to the control cabin. The ROV winch is fitted to the side of the Shack during ROV operations.
DAVIT ARM	300KG
WINCH	700 kg (1.63m x 1.28m x 1.32m)

### UMBILICAL

UMBILICAL	Polyurethane coated main lift umbilical
DIAMETER	22mm
LENGHT	Up to 300m
BREAKING STRAIN	750KG



JIFMAR OFFSHORE SERVICES  
1 rue du cinéma  
13016 MARSEILLE - FRANCE  
Tél. : + 33 4 86 82 03 60  
Fax : + 33 4 13 94 08 29  
www.jifmar.com

©No part of this leaflet may be reproduced in any form without written permission from Jifmar Offshore Services. This leaflet may be updated without advance notice.



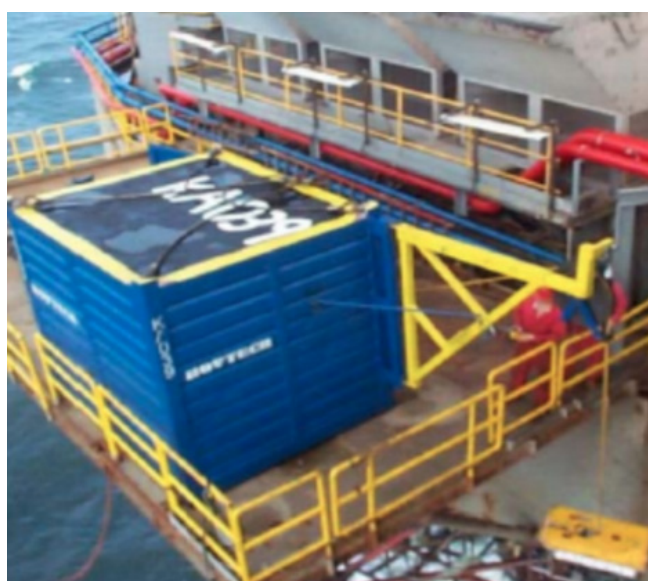
# SUPERSEAKER ROV

## EYEBALL CLASS ROV SYSTEM



The SuperSeaker has a small foot-print area, which is beneficial on rigs which are short on deck-space. This gives the client the benefit of being able to leave the system on-board their rig, ensuring its available to them when it is required.

The main jack-up drill rig support tasks the SuperSeaker provides are: Visual Observation with the usual video status covering depth, day and time data complete with video typewriter, scanning sonar, provision of spud-can surveys, positioning of sand bags for scour protection debris survey and light debris removal, pre and post drilling site survey including final seabed survey. The SuperSeaker ROV is upgraded regularly to give it the optimum performance. Recent upgrades include improved depth and heading on-screen display, powered winches and several units fitted with 300m tethers for use on deepwater capability jack-ups.



Winch  
Length 1.63 m  
Width 1.28 m  
Height 1.32 m  
Weight 700 kg

