

# MODULAR PONTOONS 40''

## MODULAR BARGES


### GENERAL

BUILDING YEAR	2008-2010
CLASS	GL
AVAILABILITY	23
PONTOONS LOADING	- 29.3 TONS FOR 2 MODULS - 58,5 TONS FOR 4 MODULS

### DIMENSIONS

LENGTH	12.20 M - 40'
WIDTH	2.45M - 8'
HEIGHT	1,85 M - 6'
DRAUGHT	0,5 M
WEIGHT	10.5 TONS

### COUPLING

SAFE	NO SPACE BETWEEN PONTOONS	
WELL HOLDING	COUPLING SYSTEM	

### APPLICATIONS

TRANSPORT BARGES:



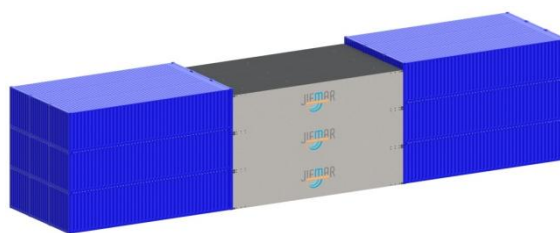
NAVAL SUPPORT

- EXHIBITION PLATFORMS (E.G. : FIREWORKS)
- CRANE FONCTIONS



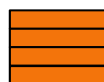
### TRANSPORTATION

EASY TO MOBILIZE ISO HANDLING EYES  
ISO 40' CONTAINER FOR SHIPPING WORLDWIDE  
ROAD TRANSPORTABLE

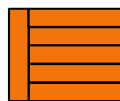


### COUPLING CONFIGURATION

- 4 UNITS CONFIGURATION : 24.40 m x 4.90 m



- 6 UNITS CONFIGURATION : 14.65 m x 12.20 m



- 4 UNITS CONFIGURATION : 24.40 m x 4.90 m



- 14 UNITS CONFIGURATION : 36.60 m x 12.20 m



MOON POOL



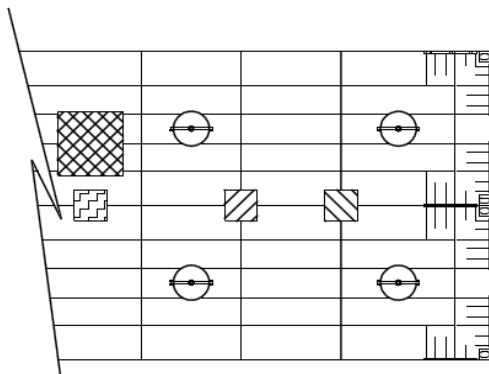
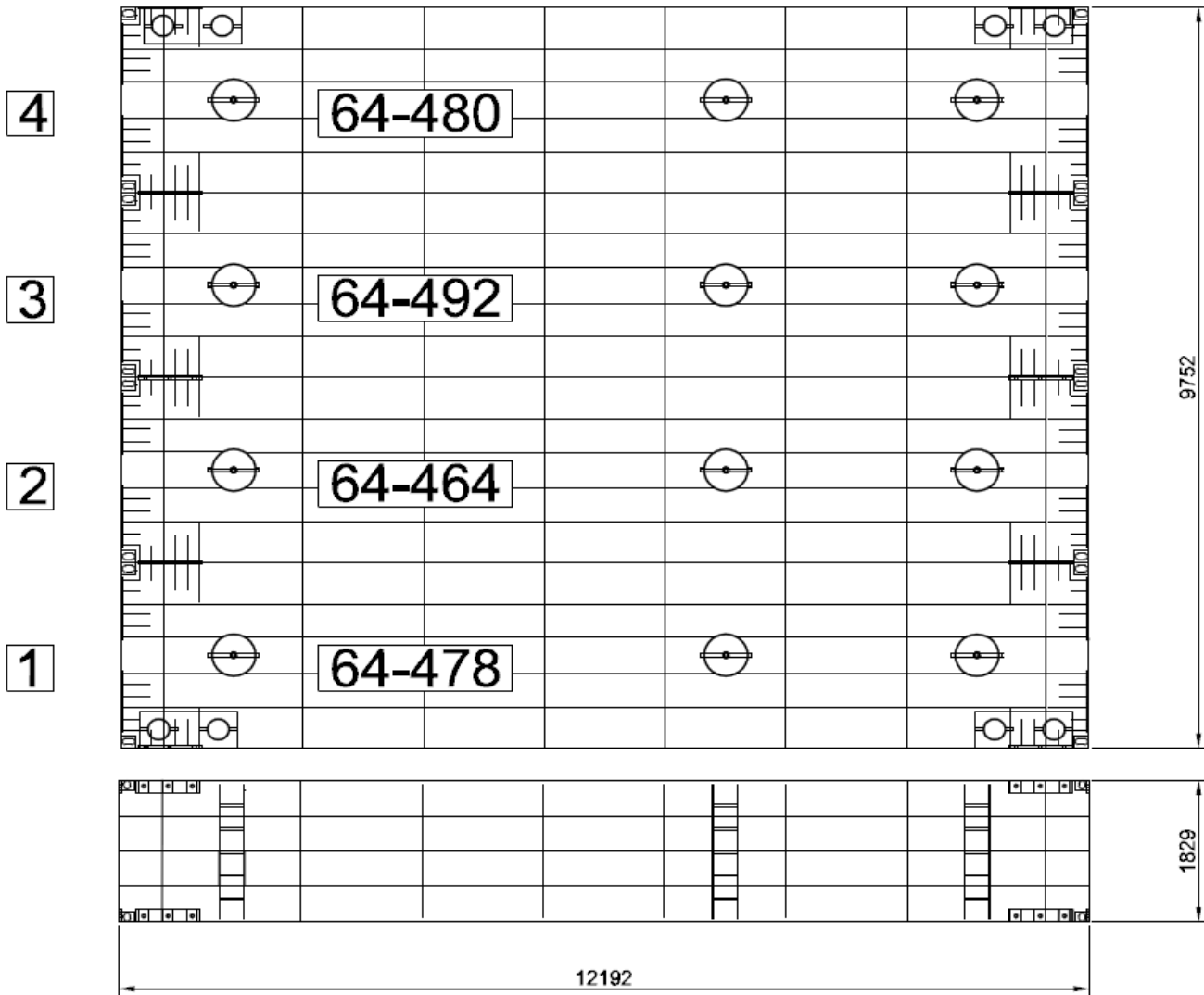
JIFMAR OFFSHORE SERVICES  
1 rue du cinéma  
13016 MARSEILLE - FRANCE  
Tél. : + 33 4 86 82 03 60  
Fax : + 33 4 12 94 08 29  
www.jifmar.com

©No part of this leaflet may be reproduced in any form without written permission from Jifmar Offshore Services. This leaflet may be updated without advance notice.



# MODULAR PONTOONS 40''

## MODULAR BARGES



LEGENDE :

